



*Your Logo and colours here
and throughout the brochure*

LOGO



- Kommerling O70 & O70 Profiles
- 5 Chamber Profiles
- Planibel A Glass
- Warm Edge Spacer Bars
- Internally Beaded
- High Security Locking System
- Same Day Quotations
- 5 Day Turnaround



Our windows are made using the energy efficient KÖMMERLING O70 & C70 5 chamber Gold Systems.

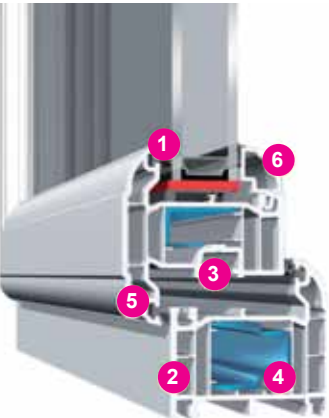
Both profiles offer a 70mm frame depth, extruded using a colourfast lead-free UPVC Greenline compound. The ovolo design of the O70 has a curved frame and opening sashes create a 'softer' appearance adding a little design flair to any installation. The C70 gives a modern look with its clean chamfered design.

Both profiles are combined with high security multi-point locking and internal beading for enhanced security.

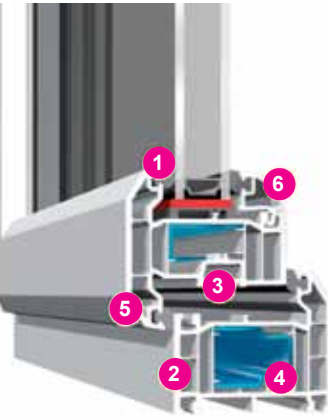
The O70 & C70 systems are highly regarded as amongst the easiest to install and can be complemented with a front/rear door, PremiLine patio, bi-fold, lift and slide or a conservatory.

Profiles

Ovolo O70 System.



Chamfered C70 System.



- 1 Black gaskets and weatherseals, provide lasting performance and slimmer sightlines.
- 2 Five chambered system is more energy efficient than the 3 chambered designs from many of our competitors.
- 3 The full depth, central eurogroove helps make the windows and doors more secure.
- 4 Steel reinforcement is used where needed, to add additional structural strength.
- 5 The ovolo design of O70 Gold shows off soft sculptured lines in the frame, sash and glazing bead, while the C70 Chamfered design gives a modern and clean look through the frame sash and bead.
- 6 Single leg glazing bead is highly secure and easy to install on site.

Heritage Windows



ASTRAGAL BARS

Astragal Bars can be fitted to any product enhancing the look of windows, doors & conservatories by giving them the traditional Georgian appearance of individual panes. They are available in white or woodgrain foils.

The Astragal Bars are securely fitted by the use of 'clips' wrapped around the sealed units and centre clips with adhesive pads specially developed to adhere to glass in all weathers. When 'grids' are specified, they will be factory fitted to save time 'on site'

- Option of either chamfered or featured Georgian Bar.
- Comprises of edge clips, centre clips, and bars with mitred ends.
- Both bars are 25mm wide and 16mm deep for an authentic finish.
- Can be toe and heeled during installation.
- Removes issue of failed 'stick on' alternatives.
- Provides a more authentic finish.



RUN-THROUGH SASH HORNS

Run-Thru Sash horns create an attractive alternative to the traditional vertical sliding window. Available in both white and foiled options they are designed to appeal to homeowners looking to replace traditional sash box windows with a more cost effective and virtually maintenance free alternative.

These are fabricated by milling the profile into shape as opposed to the less effective screw on method.

The system provides safe cleaning of both sashes from the inside, security, high performance and aesthetically pleasing designs. Where required profiles can be formed to provide arch heads to match existing building details.

- Sash horn option for O70 Gold system.
- One piece sash horn end cap with an integrated gasket.
- Dedicated die cast universal fixing bracket for mechanical sash joints.

FRENCH WINDOWS - FLOATING MULLION



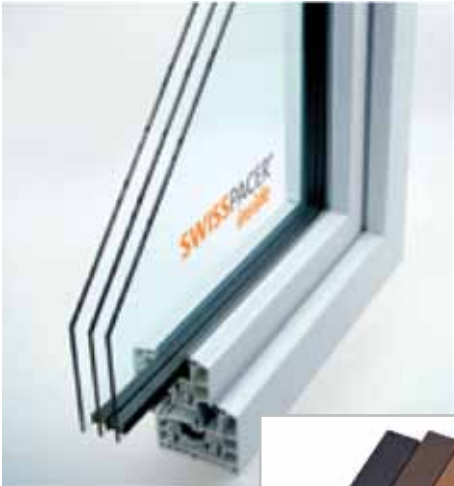
French windows are designed to appeal to owners with small casements and also those looking for a traditional appearance.

The floating mullion allows both sides of the window to be opened and offers an unobstructed view, creating a feeling of space. They are also ideal as a 'fire escape' solution where normal casements may not comply.

- O70 or C70 profile.
- Side opening casements.
- Unobstructed view.
- Ideal fire escape solution.

Tilt & Turn

This popular window style offers all the benefits of a large glazed area with its ease of cleaning and smart contemporary style. The sophisticated mechanism enables the window to be opened inwards from the top to allow for ventilation or from the side for ease of cleaning.



Spacer Bars



SGG **SWISSPACER®**

Lower heating costs through better insulation: The thermally improved spacer SGG SWISSPACER V excels with an optimised heat transfer resistance. The result: The high tech spacer bar SGG SWISSPACER V enables heating costs to be reduced by up to 5%.

- 1 Superior isolation characteristics mean higher temperatures are maintained at the edges of glass panes – significantly reducing the risk of condensation.
- 2 Higher temperatures at the edge of the pane mean less cold radiation, ensuring more comfort inside and a healthy indoor climate.
- 3 The high-quality plastic of SGG SWISSPACER in combination with a unique colour range means you can design each window and any façade to your specification.

Glass

PLANIBEL A
Clear advantages

PLANIBEL A, is a revolutionary new energy efficient glass with a high performance, low-emissivity hard coating specially developed to perform to the highest ratings within the Window Energy Ratings scale from C to A, without the need for edge deletion.

- 1 High solar factor, which maximizes the free solar heat gain (SF: 78% with external sheet PLANIBEL Clearvision).
- 2 Low Ug-value that can further be improved by the use of gas filling (Argon) and/or the use of a Warm Edge spacer.
- 3 Draws energy in from solar power and retains it, providing the best energy rating system, particularly when combined with the Swiss Spacer Bar.



Pilkington **Optiwhite™**
Extra clear, low iron glass with very high light transmission.

The use of glass in architecture and design is becoming more and more prevalent, and Pilkington Optiwhite™ is at the very forefront of making it possible.

Pilkington Optiwhite™ offers a sheer variety of benefits, making it an excellent choice for a wide range of applications. Pilkington Optiwhite™ is a low iron extra clear float glass with very high light transmission. It is practically colourless, and the green cast inherent to other glasses is not present. It is therefore ideal for use where glass edges are visible or where a neutral colour is desired. As its light transmission is higher than clear float glass, it is perfect for applications where transparency and purity of colour are desired.



Textured Glass



For privacy, pure style or to allow more light into internal rooms, decorative glass gives you a whole range of attractive options. In fact, Pilkington gives you a choice of no fewer than 18 different textured glass designs, together with our premium range of etched glass – from classic to contemporary, no one offers a bigger choice.

The advantages of Pilkington decorative glass are easy to see, too: it allows maximum light while maintaining privacy or obscuring unattractive views, and also forms an attractive decorative feature itself.

Window Locks

All opening windows are secured using the Twin-Cam Security (TSL) locking system that has revolutionised window fabrication and security; with exceptional levels of performance it offers the ultimate in casement window security and fabrication efficiency. TSL enables windows to comfortably meet, and exceed, the requirements of BS 7950 and has proved to be stronger than many shootbolts. A simple turn of the handle drives TSL's twin-cams into a double-sided strike to deliver significantly enhanced resistance to jemmying from all directions.

Side opening windows can be hung with egress hinges to allow for ease of cleaning from inside



Handles



Colours shown are stock items we can order 44 profile colours and have a wide range of handles and accessories in different colours, finishes or designs.

Profile Colours

Besides white, windows are also available with a foil coating in different colours or wood grain patterns on one or both sides. We stock the following:





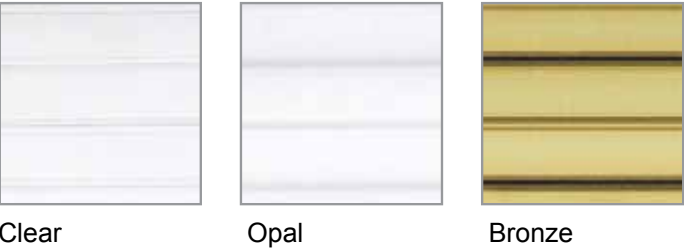
Our conservatories are made up using Europe's number one Kommerling profile in either the chamfered C70 or Ovolo design of the O70. For more information on the profiles please see page 6.

We offer a range of styles; Edwardian, Victorian, P' Shaped, Orangeries, Gable end, Lean to or totally bespoke.

We use SWISSPACER bars for comfort and energy saving and the revolutionary energy efficient glass PLANIBEL A.

Polycarbonate

Available in:-



Self Cleaning Glass

Unique coating breaks down and loosens organic soiling



Pilkington Activ™ Range

The world's first self-cleaning glass with advanced dual-action for superior results.

Smart Aluminium

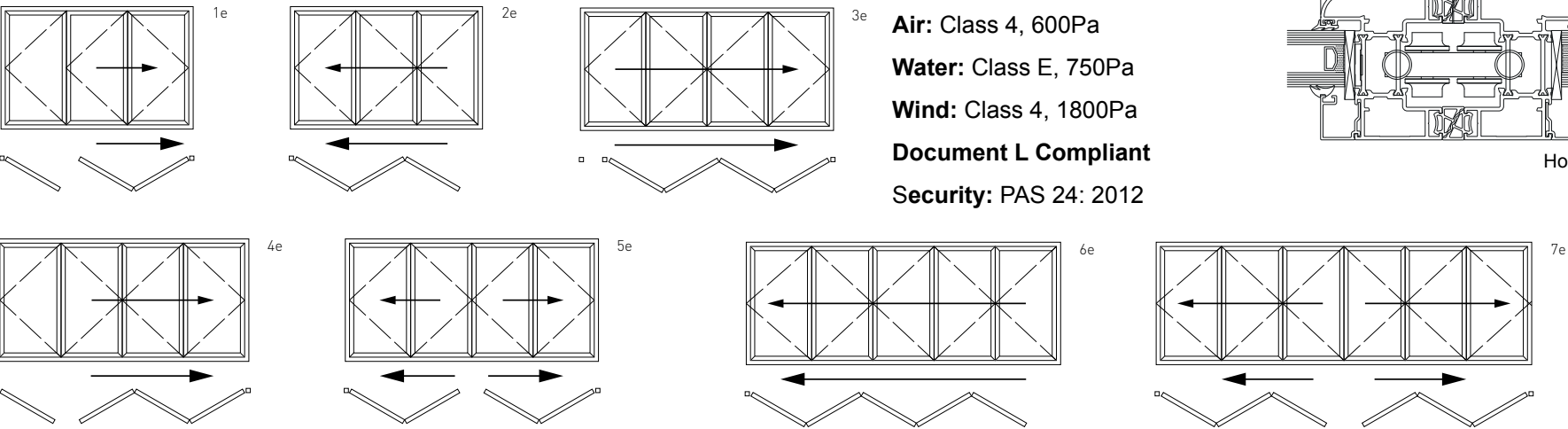
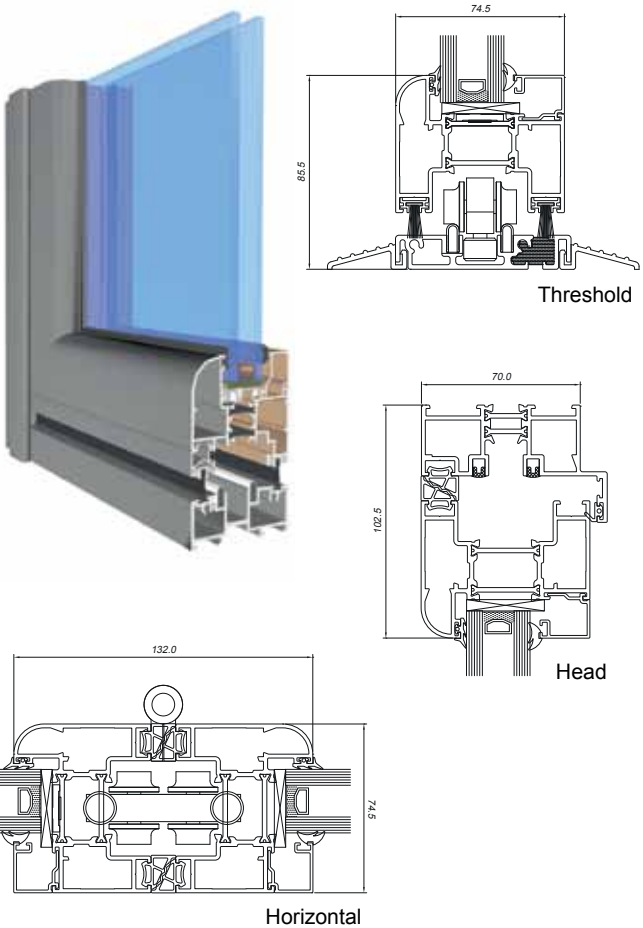


Dimensions

- Frame Width: 102.5mm
- Frame Depth: 70mm
- Typical Sight Line: 132mm
- Glass: 24, 28, 32, 34 or 36mm double or triple gazed units
- Max o/a Height: 2500mm (per sash)
- Max o/a Width: 1000mm (per sash)
- Max Sash Weight: 100kg

Technical Performance

- Finish: Single or dual colour, marine quality polyester powder coat as standard
- U Value: 1.5 W/m²K using a 1.0 centre pane
- Air: Class 4, 600Pa
- Water: Class E, 750Pa
- Wind: Class 4, 1800Pa
- Document L Compliant
- Security: PAS 24: 2012



KÖMMERLING®

SGG SWISSPACER®

be AWE R with PLANIBEL A



smart architectural aluminium

PremiLine



Our patio doors are made using Europe’s number one profile KOMMERLING. They have a chamfered design and smooth quiet running. Our long lasting, reliable and comfortable sliding door system has an aluminium-reinforced centre section. This provides a high degree of stability, security and tightness. It also means the ability for larger window areas and sliding elements than ever before. Our sliding door system is compatible with all 70mm systems.

The Kommerling PremiLine sliding patio door is packed with technical features and is extruded using our Greenline lead-free PVCu compound. There are relatively few systems companies harnessing lead-free compounds for extrusion and even fewer producing an environmentally friendly, sliding patio door system. It’s also the perfect match to our C70 and O70 systems and given the innovative design of the outer frame which is 70mm deep tapering out to 80mm to accommodate the sash, it can be easily can easily be coupled to any Kömmerling 70mm frame and benefits from a large range of ancillaries.



- 1 Can offer 2,3 or even 4 panel openings.
- 2 High quality stainless steel tracks guarantee the maximum possible service life.
- 3 Extremely smooth running sliding doors, moving at the slightest touch.
- 4 Offers high security and large units are easily achieved.
- 5 Striking design with a choice of low sightline gaskets in black or grey.
- 6 Outer frames can be welded or mechanically jointed. Low threshold option also available.
- 7 Option of full length aluminium handle for further stability (not shown).

PremiLine PRO

PremiLine PRO is the result of considerable expertise in door systems and is the patented, high security version of the PremiLine door system. An intuitive and clever locking system is hidden at the interlock and only requires the turn of a door knob to fully engage the enhanced security locking mechanism.

With no unsightly plunge bolts, it’s one of the first PAS 24 certified PVCu patio door systems to meet the Lifetime Homes standard and has been designed with new Document Q in mind.



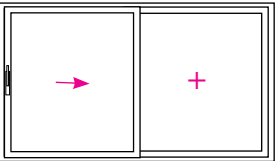
intuitive and clever locking system

PremiDoor 88 Lift & Slide - Extraordinary Measurements

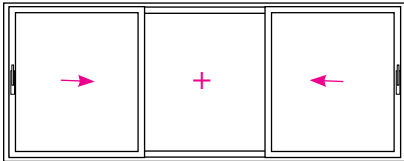


The Lift and Slide door is a genuine alternative for a bi-folding door and with less PVCu sightlines, and more glass in which to see the world outside. The product is designed for large openings in the home or conservatory and is capable of openings of up to 6.5 metres with just two sashes.

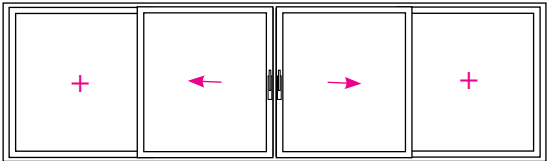
There’s also the option of 2, 3 and 4 pane door systems which are capable of spanning over 10 metres. The running track has been specifically designed for lasting performance and ease of use. There’s also a thermally broken frame that provides energy efficiency and the necessary structural integrity to carry a large sash with ease. Like all of our window and door systems, it’s extruded with our lead-free Greenline compound.



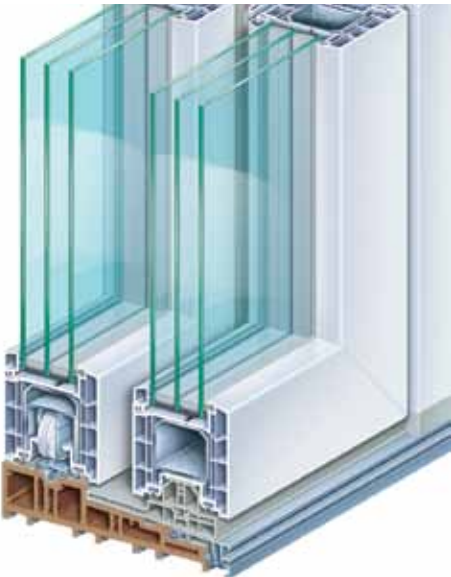
Double pane option with moving left hand and fixed right hand sash



3 pane option with moving left hand and right hand sash with fixed middle



4 pane option with moving centre sashes and fixed left and right hand sashes



- High profile stability for floor to ceiling elements up to 2.90 m.
- Excellent heat transfer coefficient $U_f = 1.2-1.3 \text{ W/(m}^2\text{K)}$, an optional UD value of max $0.8 \text{ W/(m}^2\text{K)}$ is possible.
- Barrier free transition from inside to outside – high insulation WPC threshold
- Reliable functionality, great handling ease, easy to open and close as if sliding on air
- Three sealing levels ensure the optimal protection against wind, rain, and outside noise.
- Aluminium covers for virtually unlimited colour potential

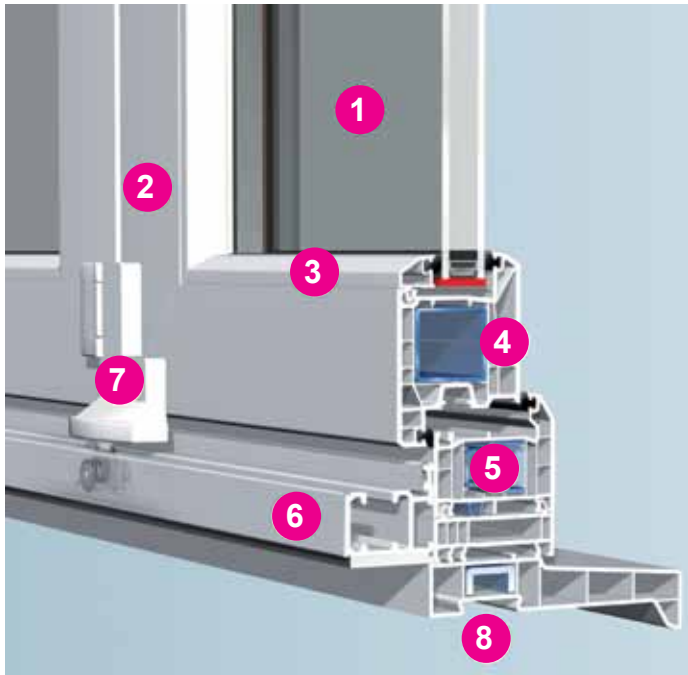




Our bi-fold and multi fold door systems are made using Europe's number one profile KOMMERLING and Fuhr high security locking system. They offer smooth and simple operation. They have a chamfered 70mm design and run on maintenance free stainless steel concealed rollers. Doors can be easily folded back to left or right and can be specified to open inwards or outwards.

This new system can facilitate 3, 4, 5, 6 or even 7 sashes and is capable of spanning 5.7metres with maximum sash sizes of 2.2m. The stunning aesthetics of the door are enhanced with the option of either bevelled or ovolo glazing beads and low lying gaskets for better sightlines.

These bi-folding doors harness 5 chambered profiles for better energy efficiency when many other companies products have just 3. All profiles are fully reinforced to add structural stability, while the powder coated aluminium tracks guarantee the maximum possible service life. Like all Kommerling systems, the bi-folding door is available in a wide range of colours and woodgrains.



- 1 Option of 3, 4, 5, 6 or even 7 sashes.
- 2 Capable of spanning 5.7m with sash sizes of 2.2m high x 0.8m wide.
- 3 Beautiful design with the option of bevelled or sculptured glazing beads with low lying gaskets.
- 4 Five chambered profiles for improved energy efficiency.
- 5 Fully reinforced to add structural stability.
- 6 Powder coated aluminium tracks guarantee the maximum possible service life.
- 7 Impressive smooth sliding doors, folding with ease of movement at the hinge.
- 8 All PVCu profiles manufactured using our exclusive lead-free Greenline compound.



HEAVY DUTY LOCKING

Features

- Stainless steel
- 100% corrosion resistant
- Trouble free operation
- 10-year guarantee

Benefits

- Durability
- Reduced call-outs
- Excellent appearance
- Security



- Stainless steel deadbolt
- Reversible latch
- Standard dimensions
- Heavy duty FUHR hooks (extending 20mm)
- Free running, adjustable roller cams

UPVC - Front Door Panels

We have a comprehensive range of styles available, or feel free to design your own using one of our profiles. Choose leaded, stained glass, patterned glass or Georgian bar.



Back Doors French Doors



- Kommerling profiles
- Low line gaskets
- Steel reinforced welded profiles
- Multi-point locking & shoot bolts
- High security
- Internal beading
- Colourfast UPVC
- 28mm sealed units
- High impact profiles
- Choice of handle colours
- Choice of hinge colours

Our UPVC doors are made using Kommerling steel reinforced welded profiles. They feature low line gaskets and have a robust multi-point locking system and strong hinges which are available in different colours.

These high security doors are virtually maintenance free as they are made using colourfast UPVC. The range of designs means that there will be something to match virtually any house of any age.

Available in a range of colours and a choice of handle colour these high performance doors combine looks with security and longevity.



White Gold Chrome



PremiFold

The revolutionary PremiFold window and door systems. The result is a PAS 24 certified and Document Q compliant slide and swing door system and separate window solution for the modern home.

PremiFold is the latest in a long line of product innovations from Kömmerling. It's quite simply a revelation in the way in which you can open windows and doors, helping to maximise ventilation, without compromising on security. It's a slide and swing window and door system that is simple and easy to operate for consumers.

- PremiFold harness existing C70 and O70 Gold® profiles.
- No visible hinges and hardware.
- Incorporates both double and triple glazing.
- Capable of achieving large spans.
- Single leg glazing bead is highly secure and easy to install on site.
- Steel reinforcement is used where needed, to add additional structural strength.
- PAS 24 certified and Document Q compliant door solution.



KÖMMERLING®



Composite Doors

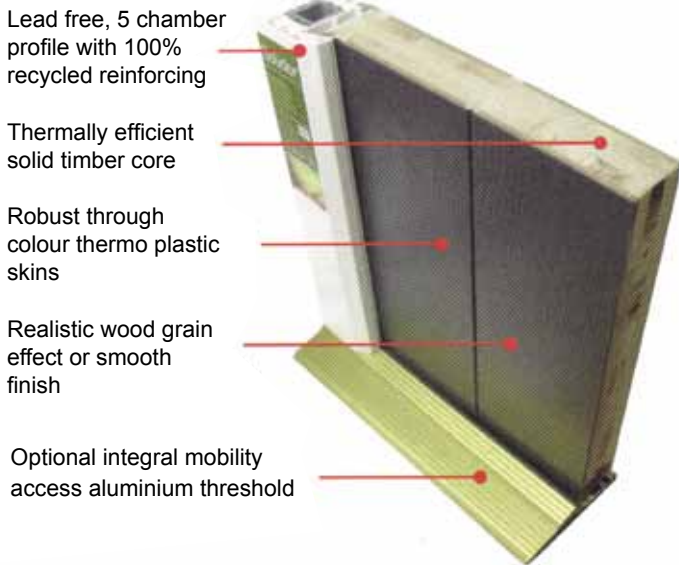
Our Solidor range is an outstanding collection of unique solid laminate 48mm timber core composite doors that combine classical or modern styling with high security locking which provides a stunning, high quality and secure entrance to any home.

These exclusive doors are available in a wide range of style and colour options and various low threshold options both UPVC and aluminium, making it the perfect solution for easy wheel or push chair access.

Our colour range is by far the widest in the market. Our doors are 'through colour' not just a simple gel finish or stain on the surface.

As you would expect from a market leading product, that's a result of a comprehensive product development programme, we offer a complete product guarantee. The warranty covers the door construction, finish, lasting performance, glass, hardware and all other accessories.

All of our doors are based on our proven 48mm design that is 10% thicker than our nearest competitors. Our hardware and accessories are also sourced from world leaders in their respective fields and importantly, are free from harmful lead additives.



SECURITY



DOUBLE & TRIPLE GLAZED UNITS
Manufactured to BSEN1279 using 4mm toughened safety glass for double glazed sealed units and a mixture of laminated glass and toughened glass for triple glazed sealed units.



MAGNUM SECURITY
For extra security and piece of mind upgrade to the Magnum cylinder. It has been tested to the highest grade of BS EN 1303 for security achieving the maximum resistance to physical attack.



COLOUR FASTNESS GUARANTEE
All doors have a guaranteed UV stable colour fastness. All Foiled products match, so that the door and the frame match together.



KEY OPERATED MULTI
For those who prefer not to have a handle on their door. This upgrade option offers a key operated multi point lock.



MULTIPOINT LOCKING
A wide range of multi-point locking, standard handle operated, night latch and key operated multi or just key only multipoint locking, security is never compromised.



We take environmental issues seriously and believe it our duty to protect the planet. We only select suppliers and materials that follow our ethos.

Kommerling have been sensitive to the environment for many years and that includes their unique Greenline, lead free compound, that's inherent in all of our window and door systems.

We also operate Recycline, a process of collecting any scrap UPVC materials from customers for recycling. This includes old first generation UPVC windows that we are replacing, right across the UK.

Products such as SWISSPACER and PLANIBEL A mean lower heat requirements through better insulation and maximising solar energy. This benefits the environment in several ways. There is no need to extract, transport, supply and process additional energy, this not only saves resources but also decreases the level of CO2 emissions in the environment.

Our composite doors from Solidor are 100% recyclable, all timber that is used is harvested from sustainable sources and complies with FSC regulations. These doors are manufactured in the UK minimising the carbon footprint. They are lead free and designed with a thermally efficient enforcing system.



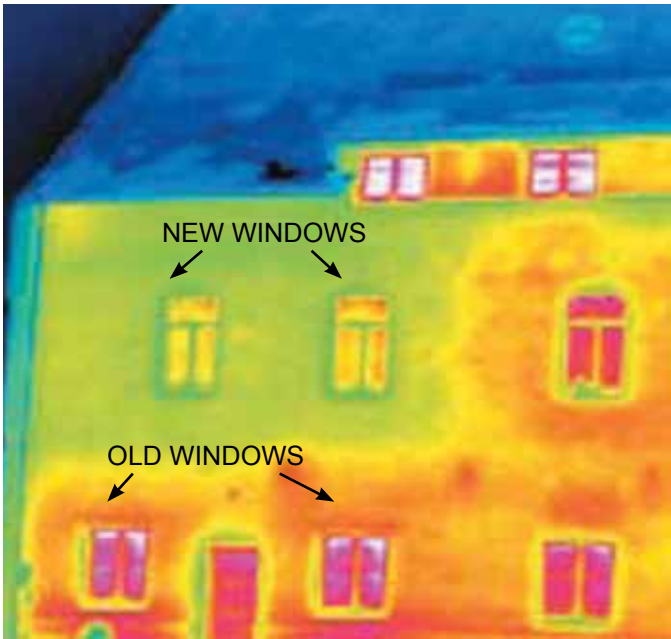
The Kommerling system has long-lasting plastic profiles that have been stabilised using environmentally friendly calcium-zinc and have an extremely low maintenance requirement. In contrast to wooden profiles, they never need painting.



Greenline - our commitment to the use of lead free materials.

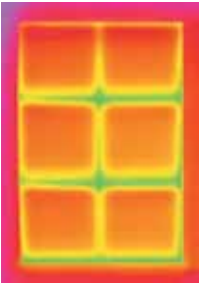


Recycline - our commitment to the recycling of waste UPVC materials.

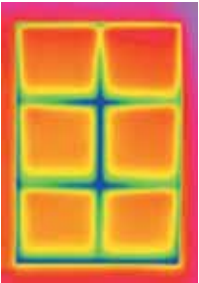


The thermal image of the house above, shows the green areas (top left) where old windows have been replaced with modern energy efficient ones, in contrast to the old existing windows shown in magenta, which let considerable heat out of the home.

The image below shows the warm edge effect of SWISSPACER. The dark blue areas showing reduced temperature or up to 5.3° when standard spacers are used.



With SGG SWISSPACER.



Without SGG SWISSPACER.



What is a “Warm Edge”?
At the edge bonds, a “gap” is created between the double glazing panes with the help of spacers. This creates a space filled with inert gas or air between the glass panes, a key factor for the insulating efficiency of the glazing. The spacers create a linear thermal bridge of considerable length within the window component. When metal profiles are used, thermal heat is more or less released into the atmosphere – along the entire transition area between glass and window frame.

PLANIBEL A

Once assembled in double glazing PLANIBEL A provides:
A high solar factor, which maximizes the free solar heat gain (SF: 78% with external sheet PLANIBEL Clearvision);
A low Ug-value that can further be improved by the use of gas filling (Argon) and/or the use of a Warm Edge spacer.

PLANIBEL A is a revolutionary new hard coating that meets the highest glass performance expectations for Window Energy Ratings (WERs) without the need for edge deletion. Thanks to its unique “fasT” technology,

PLANIBEL A offers unrivalled processing performance with faster toughening cycles of up to 15% over traditional hard coatings and up to 25% improvement in comparison with alternative soft coating solutions.

With exceptional performance and enhanced processing benefits, helping your customers to achieve WER ratings of C to A using PLANIBEL A could not be easier, PLANIBEL A has taken hard coatings to the forefront of glass technology making it the right choice for both the processor and window manufacturer.

The combination of carefully selected materials, expert process and careful waste disposal make our products among the most energy efficient and environmentally friendly on the market.

Window Energy Rating

UPVC Casement Window A

Thermal Rating Register	0 +	A	Energy Rating kWh/m ² /year of energy consumption
	-10 to < 0		
	-20 to -10		
	-30 to -20		
	-50 to -30		
	-70 to -50		
	-70 +		

The Window Energy Rating is a relative rating based on a notional house and windows in an average UK location. Actual energy performance will vary with building detailing, usage, local climate and internal temperature.

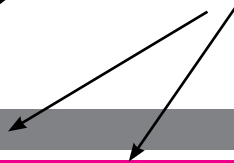
certass
Quality & Evaluation for Construction

To Check this label is current visit:
www.thermalratingregister.org

LOGO



Your logo and colours here



Your contact details here